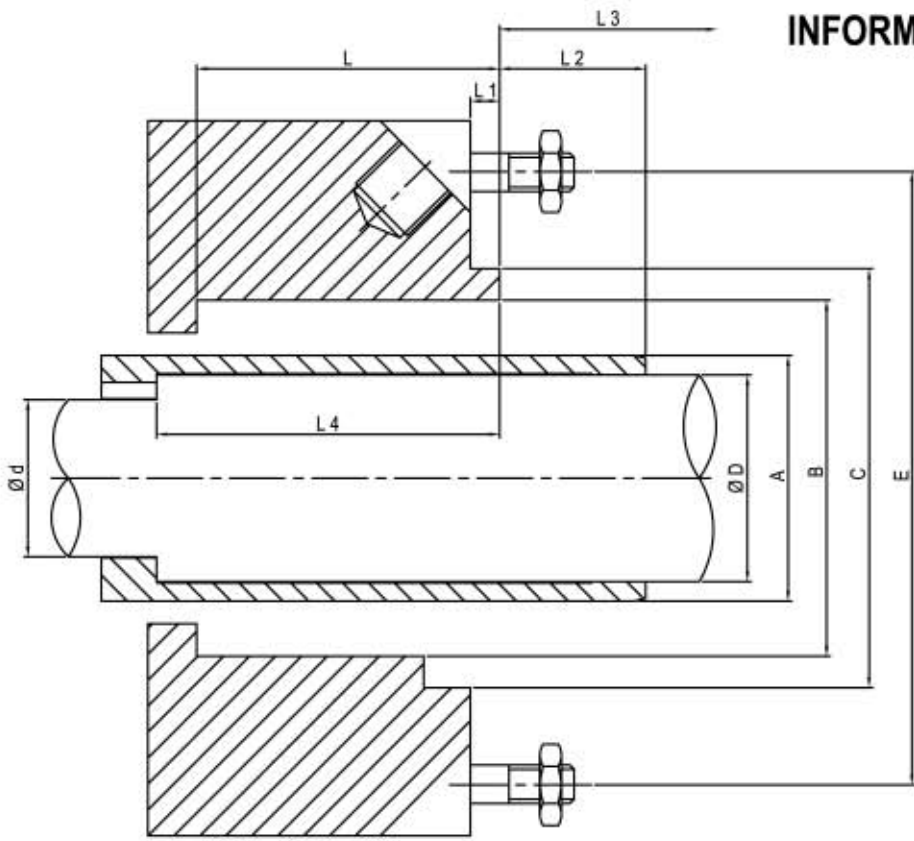
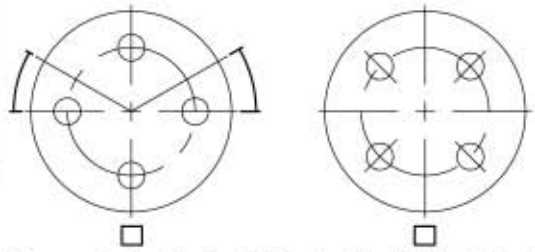




## INFORMATION DATA



- Ø d Small Shaft O.D. \_\_\_\_\_
  - Ø D Big Shaft O.D. \_\_\_\_\_
  - A Sleeve O.D. \_\_\_\_\_
  - B Stuffing Box Bore \_\_\_\_\_
  - C St.Box Collar Dia \_\_\_\_\_
  - E PCD of Bolt \_\_\_\_\_ No of Bolt \_\_\_\_\_ Bolt Size \_\_\_\_\_
  - L Depth of St. Box \_\_\_\_\_
  - L 1 Collar Length \_\_\_\_\_
  - L 2 Sleeve Extension \_\_\_\_\_
  - L 3 Nearest Obstruction \_\_\_\_\_
  - L 4 St.Box Face To Shaft End \_\_\_\_\_
- Stuffing Box (Jacket OR Non Jacket)



Please  Confirm Direction Bolt To Give Easy Flushing & Quinching

COMPANY CODE : \_\_\_\_\_

### PUMP DATA

MAKE \_\_\_\_\_ TYPE \_\_\_\_\_ SPEED \_\_\_\_\_ RPM \_\_\_\_\_

MODEL \_\_\_\_\_ ITEM / TAG NO. \_\_\_\_\_

M.O.C. \_\_\_\_\_ EXISTING SEAL MAKE \_\_\_\_\_ TYPE \_\_\_\_\_

### OPERATING PARAMETERS

TOTAL DIFFERENTIAL HEAD \_\_\_\_\_ SUC. PR. \_\_\_\_\_ DIS. PR. \_\_\_\_\_

DIRECTION OF ROTATION (VIEW FROM MOTER END) \_\_\_\_\_ CW  ACW  BOTH

### FLUID DETAILS

MEDIA \_\_\_\_\_

PUMPING TEMP (PT) \_\_\_\_\_ MAX. TEMP \_\_\_\_\_

SP. GR. AT PT \_\_\_\_\_ VISC. AT PT \_\_\_\_\_

BOILING POINT \_\_\_\_\_ FREEZING POINT \_\_\_\_\_

MEDIA DESCRIPTION \_\_\_\_\_ CLEAN  SEWAGE  ABRASIVE  SLURRY  TOXIC  HAZARDOUS

PERCENTAGE OF SOLIDS \_\_\_\_\_ GRAIN SIZE \_\_\_\_\_

### OTHER REMARKS

\_\_\_\_\_  
\_\_\_\_\_